

10-County Economic Situation and Outlook

Dr. Martin Shields

Regional Economics Institute

Colorado State University

Martin.Shields@colostate.edu

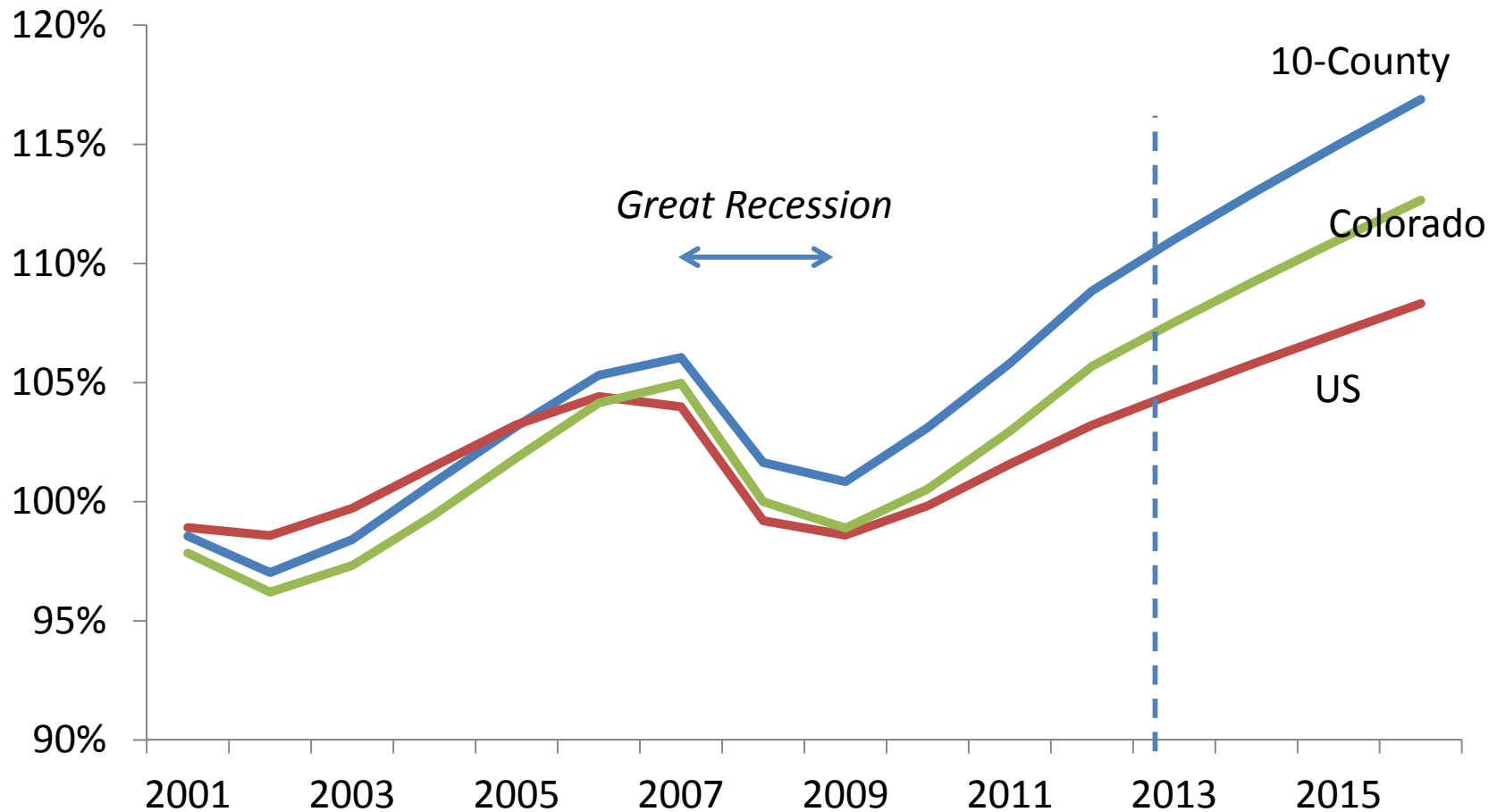
(970) 491-2922

Today's Talk

- What has happened over the past 12 months?
- Where is the region heading in 2014?
- What are the most pressing economic challenges?

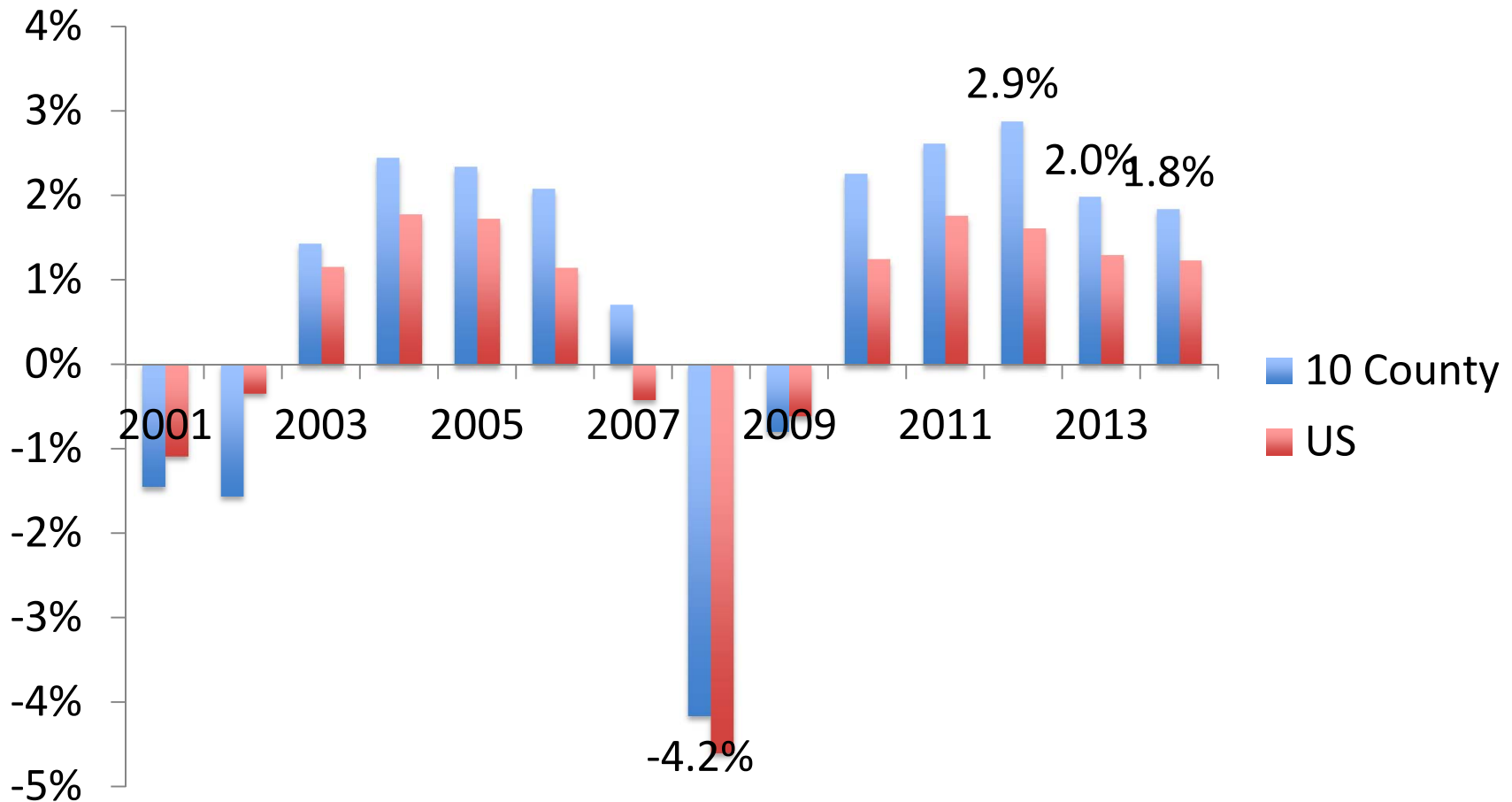
Regional Recovery Outpacing State and National Averages

employment as share of 2001 total



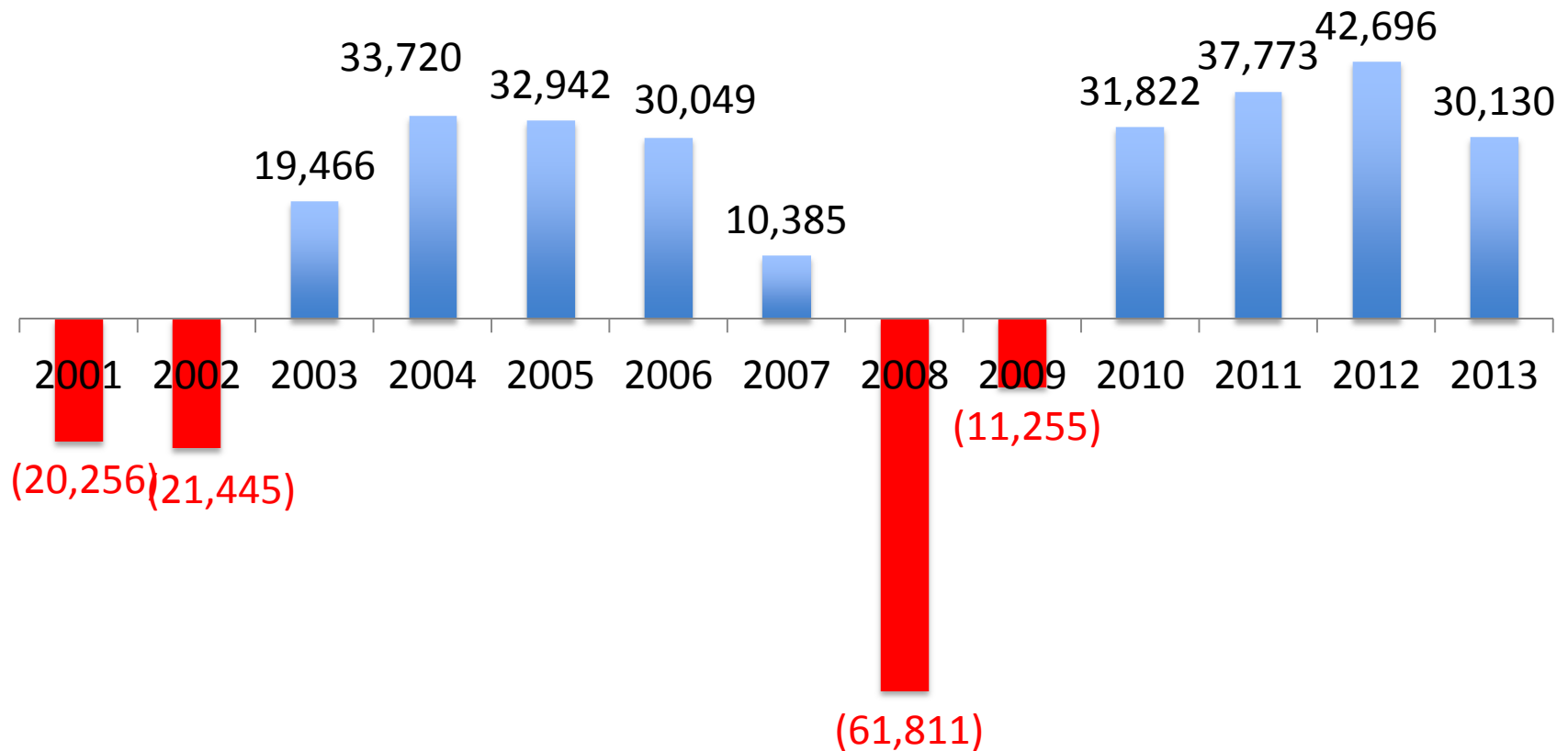
Recovery Not Too Shabby

job growth rate from previous year



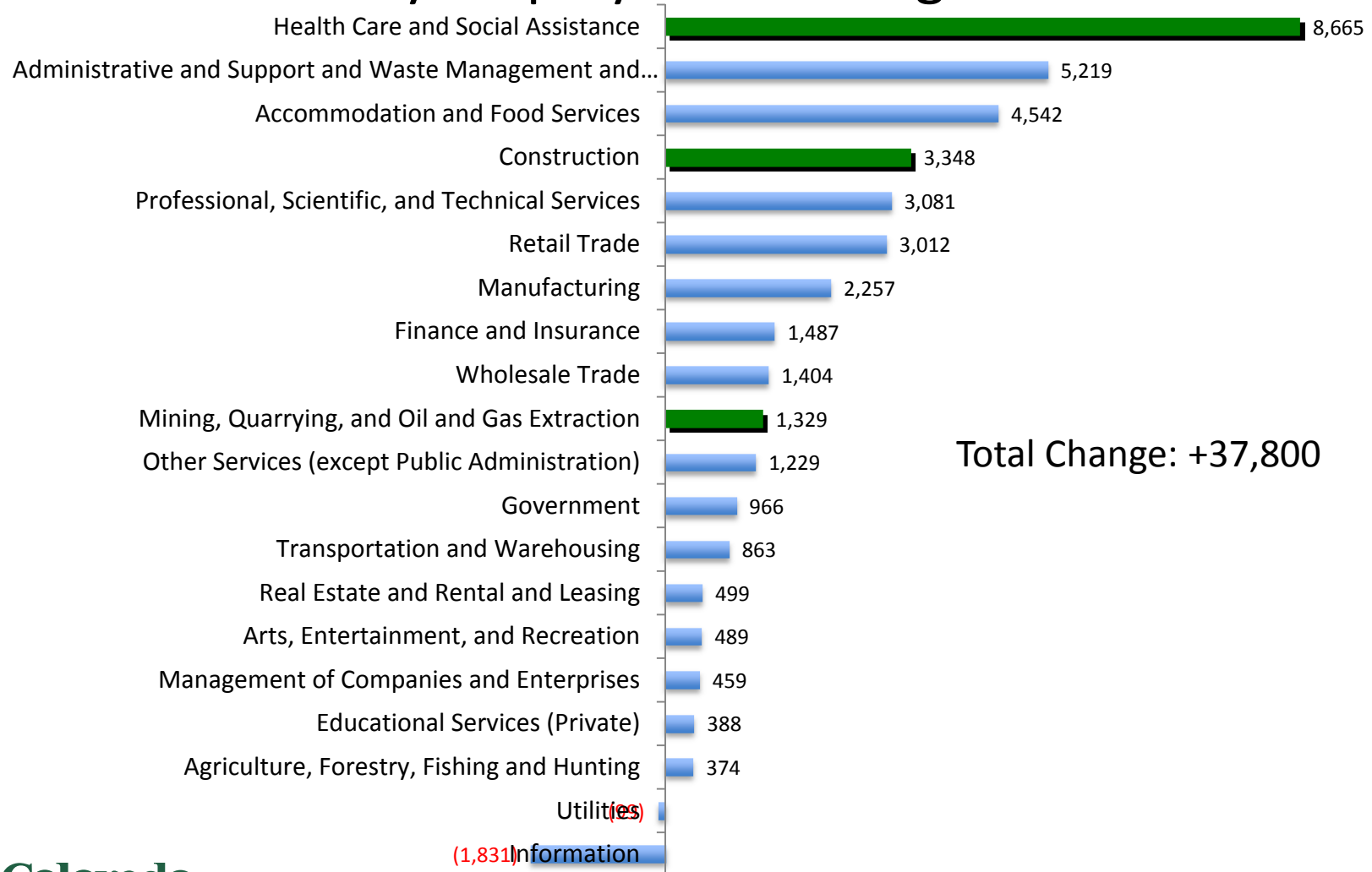
Another View

job change from 12 months earlier



Which Industries Lead the Recovery?

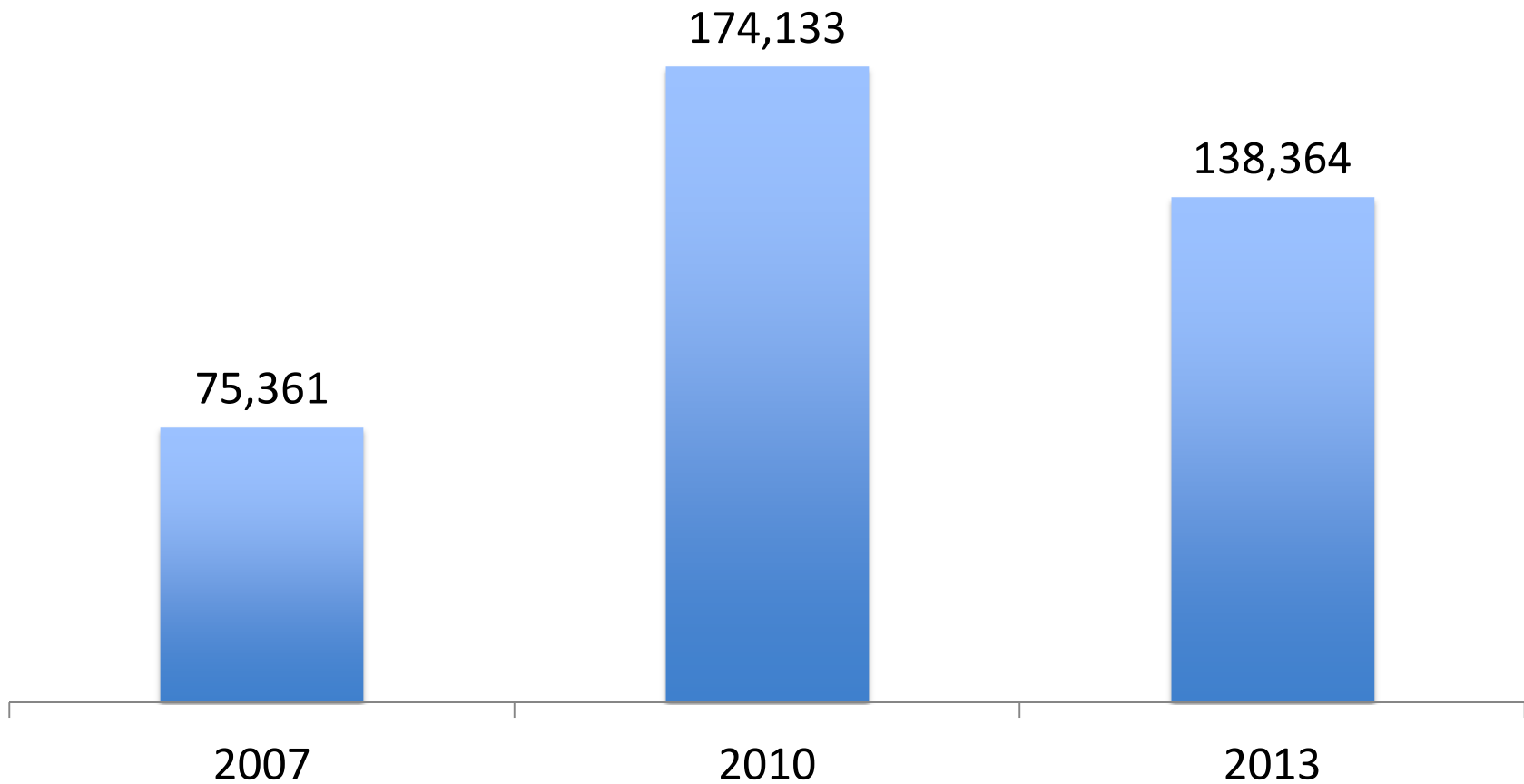
10-County Employment Change: 2011-12



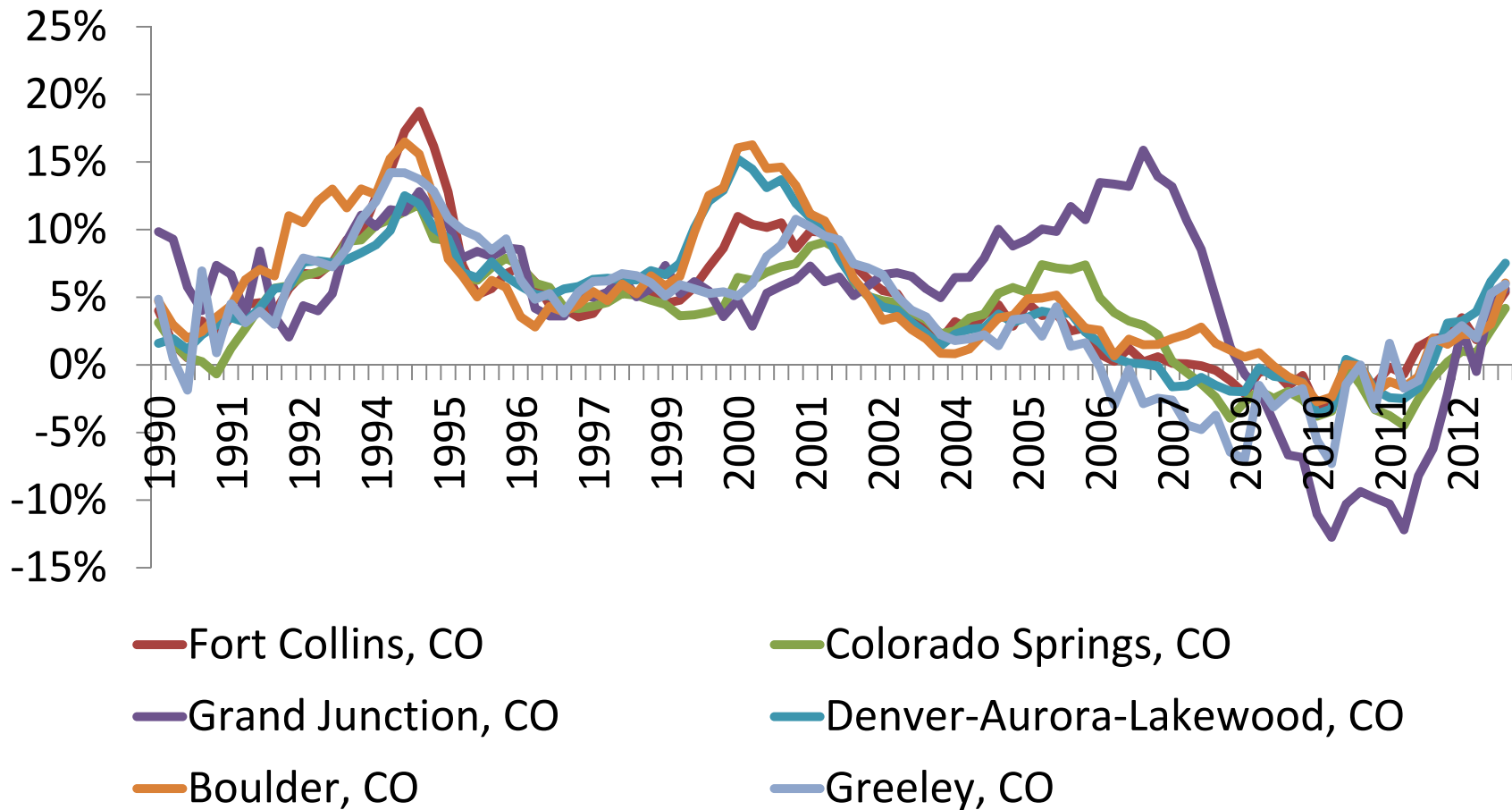
Job Growth by County: 2011-12

	Job Change	Pct Change
Adams County	11,330	7.7%
Arapahoe County	15,185	5.6%
Boulder County	8,581	5.6%
Douglas County	5,399	6.0%
El Paso County	5,457	2.3%
Jefferson County	9,315	4.6%
Larimer County	5,955	4.7%
Mesa County	990	1.7%
Pueblo County	812	1.5%
Weld County	6,739	8.6%

Number of Unemployed Remains High

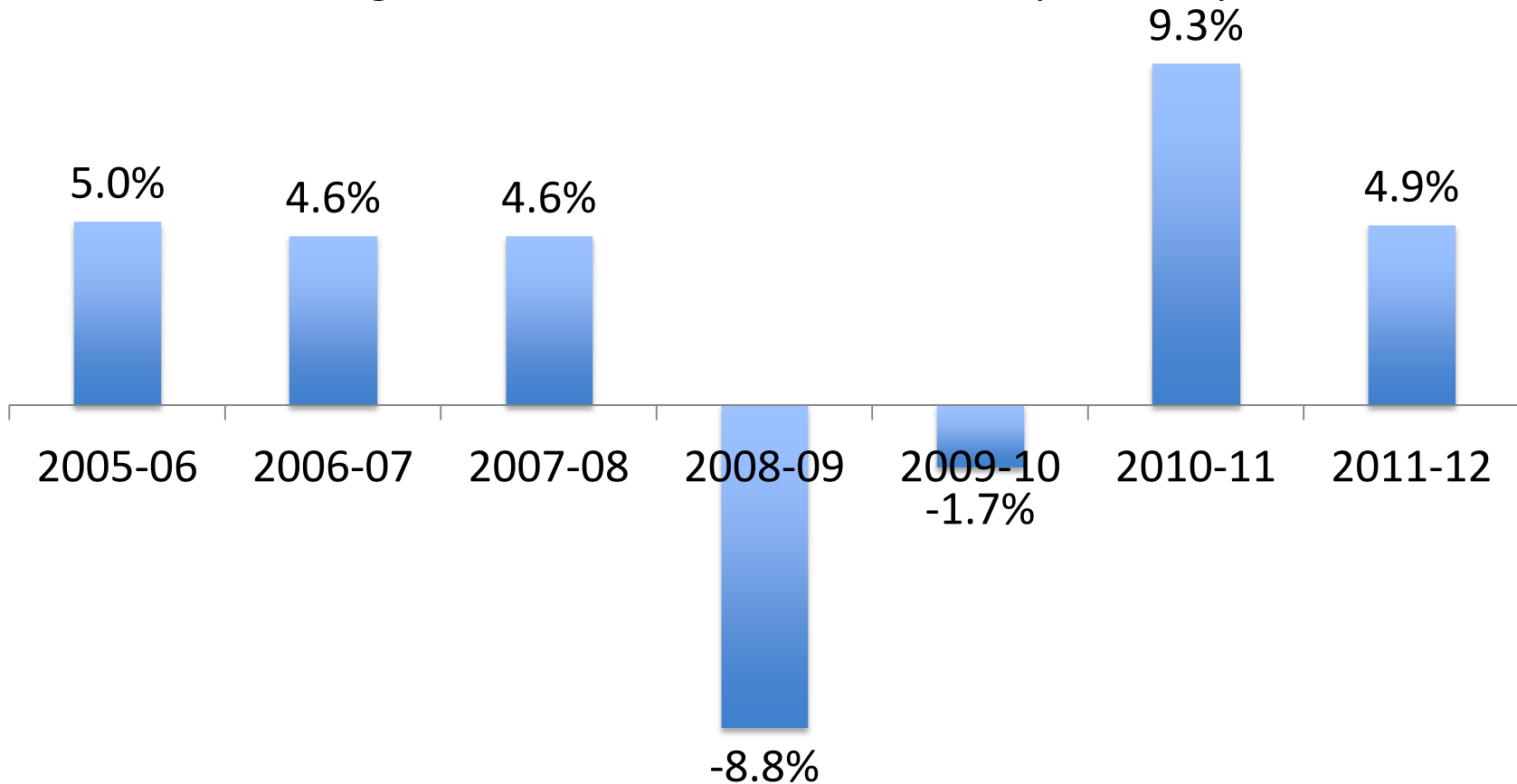


Housing Markets are Bouncing Back



State Sales Tax Revenues Bouncing Back

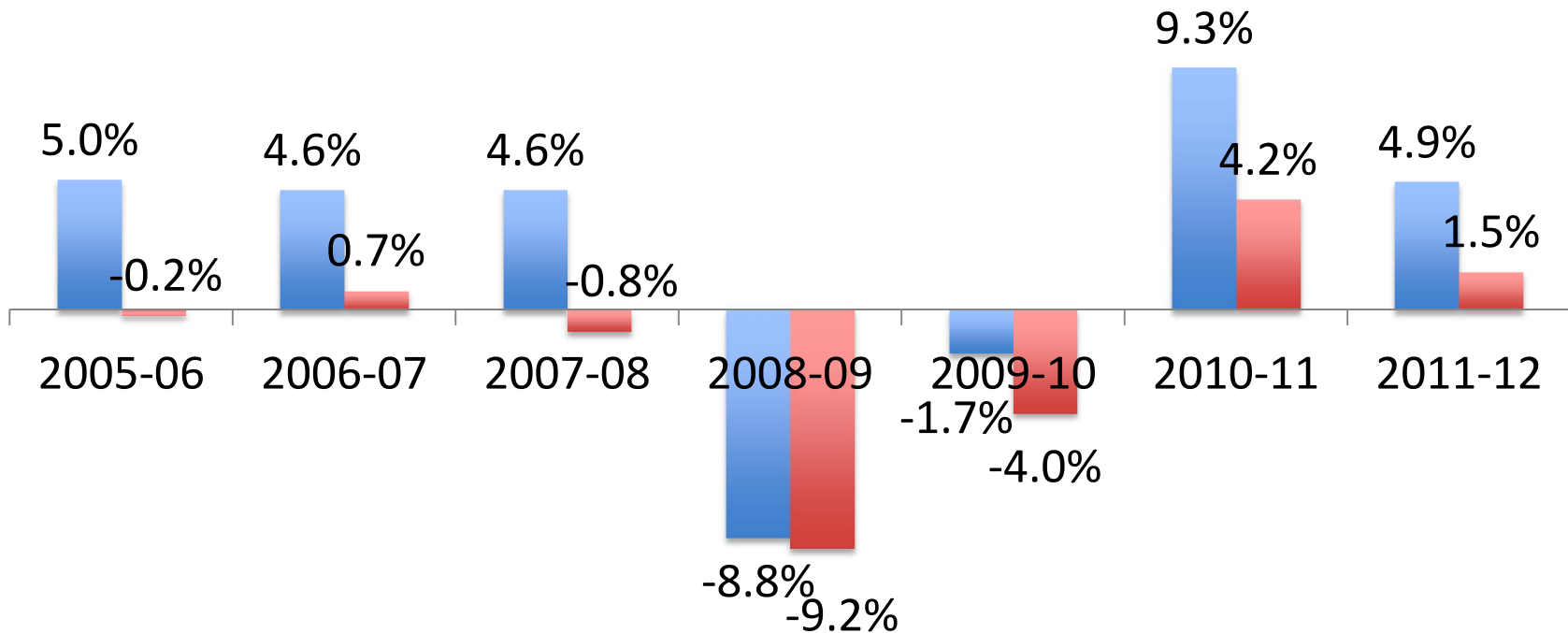
change in state sales tax revenue from previous year



State Sales Tax Revenues

Bouncing Back????

Change in state sales tax revenue from previous year:
adjusted for population change and inflation



2014 OUTLOOK (IT'S NEVER TOO EARLY!)

2014 Outlook

- We can stop talking about “recovery”
 - But we still be disappointed that growth is not more robust
- 10-counties will continue to lead
- The recent flooding could have important impacts on tourism statewide
 - Will the roads be fixed in time?

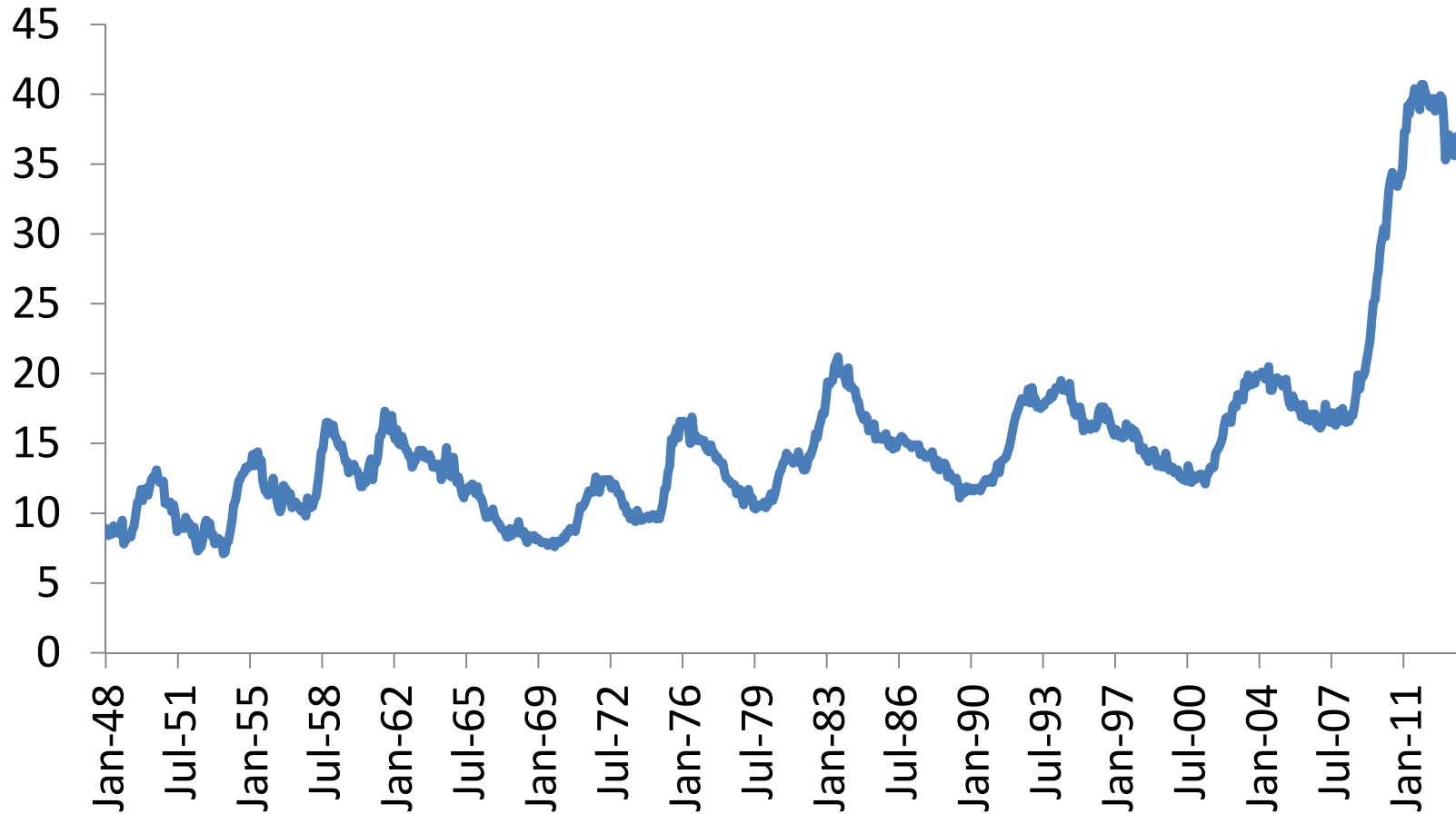
Notable Growth Sectors

- Health care
- Energy
- Professional services
- Construction and housing
- Consumer goods

MOST PRESSING ECONOMIC CHALLENGES

Unemployment Duration

average number of weeks unemployed: US



Stagnant Incomes

median family income inflation adjusted

