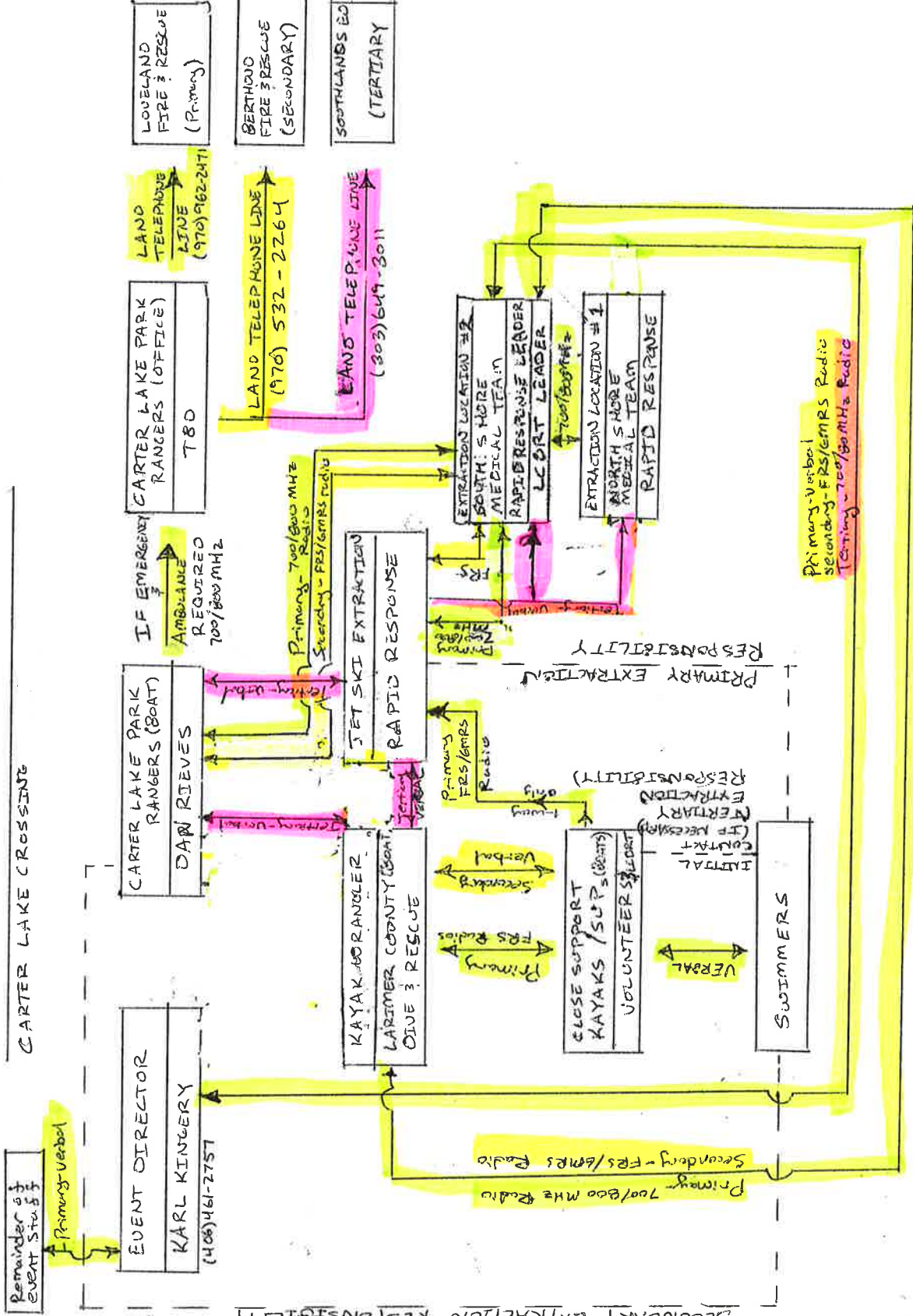


# COMMUNICATIONS PLAN

## CARTER LAKE CROSSING



### NOTES

1) Each team is responsible for comms to own members.

#### TEAMS

- 1) Rapid Response
- 2) Larimer County Dive & Rescue Team
- 3) Carter Lake Park Rangers

2) Communications between teams at Extraction Location #2 - South Shore.

#### PRIMARY

#### SECONDARY

#### TERTIARY

3) Secondary/Tertiary Comms acceptable on communication by communication basis if primary communication path fails.

Radio channels T80