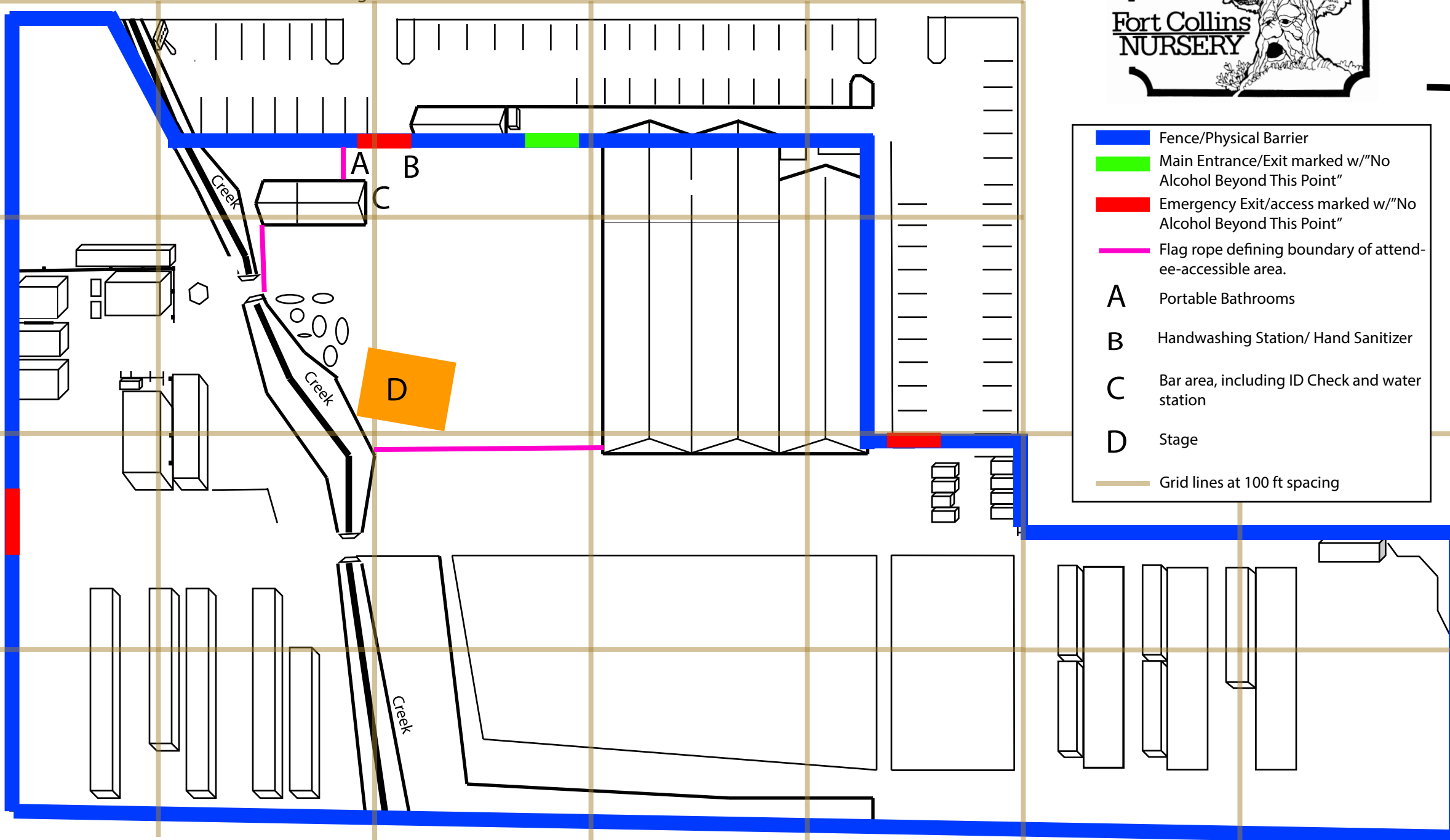
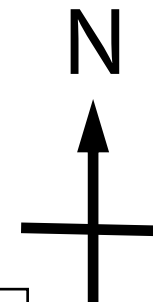
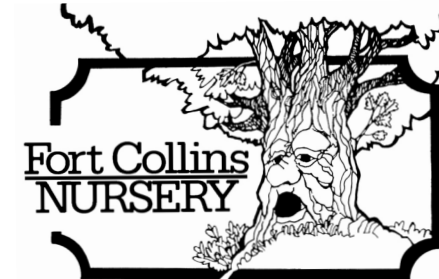


Hwy 14

Frontage Road



- █ Fence/Physical Barrier
- █ Main Entrance/Exit marked w/"No Alcohol Beyond This Point"
- █ Emergency Exit/access marked w/"No Alcohol Beyond This Point"
- Flag rope defining boundary of attendee-accessible area.
- A** Portable Bathrooms
- B** Handwashing Station/ Hand Sanitizer
- C** Bar area, including ID Check and water station
- D** Stage
- Grid lines at 100 ft spacing

Map for Special Even Permit: 2121 E. Mulberry St. Fort Collins, CO 80524