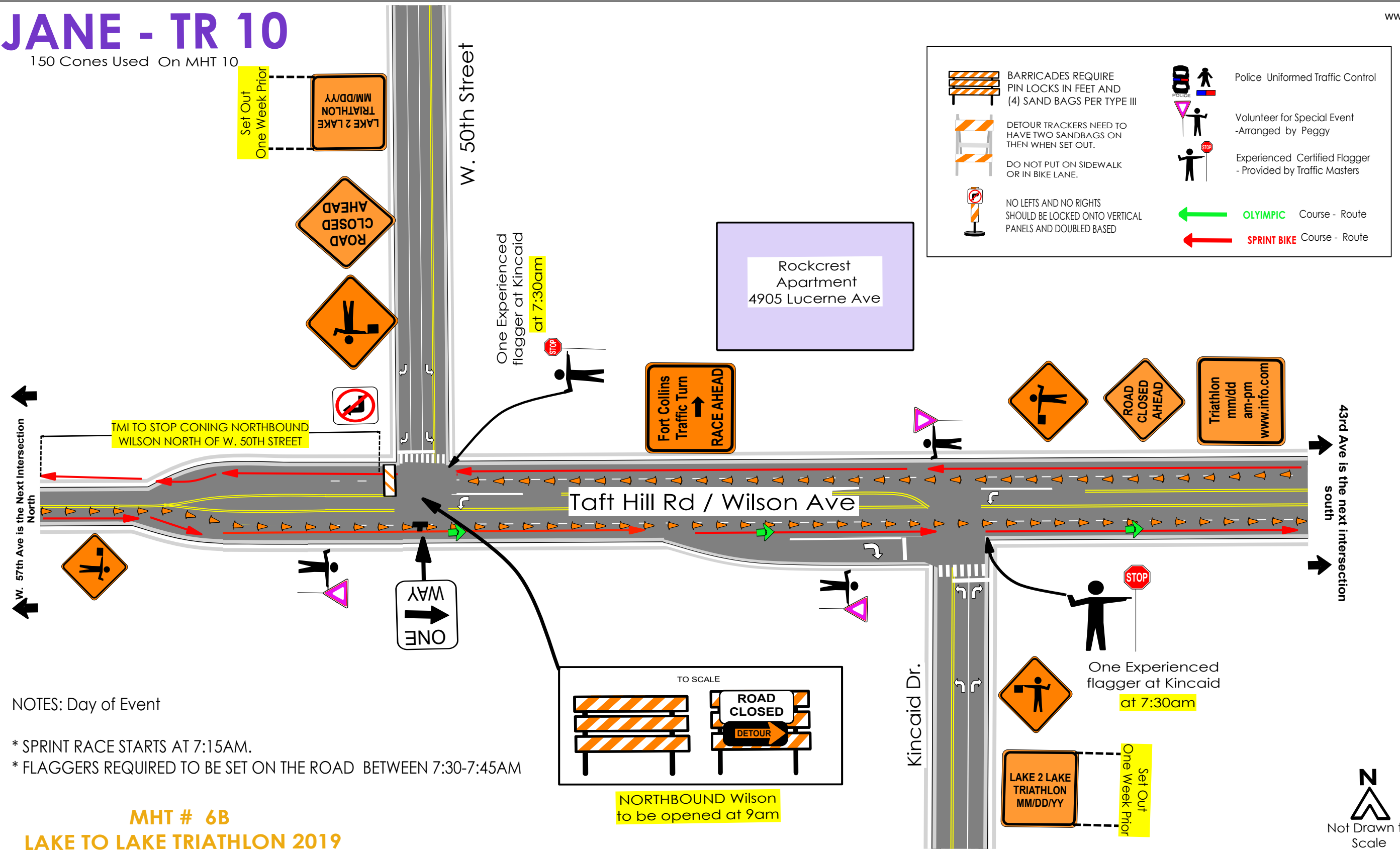


JANE - TR 10

150 Cones Used On MHT 10




NOTES: Day of Event

* SPRINT RACE STARTS AT 7:15AM.

* FLAGGERS REQUIRED TO BE SET ON THE ROAD BETWEEN 7:30-7:45AM

MHT # 6B

LAKE TO LAKE TRIATHLON 2019

	Date: 12-5-2018 Author: Amy Wager-Tjardes	Contractor: Peggy Shockley	Comments: 1. SIGNS SHALL BE SPACED APPROX. 100 FT. (SEE MUTCD TABLE 6C-1) 2. SECTION 6G-13 Work Within the Travel Way @ Intersection. Note 12 When a lane through an intersection must be closed on the far side, it should also be closed on the near side approach to preclude merging movements within the intersection. 3. SECTION 6G-04- Modification to Fulfill Special Needs - Device spacing may be adjusted to allow additional reaction time. Additional Devices may be used - Arrow Boards. 4. PERSONAL VEHICLE PARKING- IS PROHIBITED IN THE RIGHT AWAY. 5. ALL BIKE TRAFFIC TO TRAVEL IN OPEN LANE WITH MOTOR-VEHICLE TRAFFIC
	Comments: - WILL LEAVE AS MUCH ACCESS AS POSSIBLE TO RESIDENTS HOMES AND BUSINESSES - ALL SIGNS AND DEVICES WILL CONFORM TO MUTCD STANDARDS - SIGN SPACING WILL BE DETERMINED BY TABLE 6H-3 IN THE MUTCD - OPERATION WILL BE ADJUSTED AS NEEDED FOR OPERATIONS IN PROGRESS - ALL PRE WARNING SIGNS WILL BE ADJUSTED FOR SIGNAGE ALREADY IN PLACE	Location: Loveland CO, Various roadways	
	Project/P.O.: Lake To Lake Triathlon 2019	Contact/# : Peggy Shockley 970-669-9011	
	Type of Work: Special Event Triathlon		