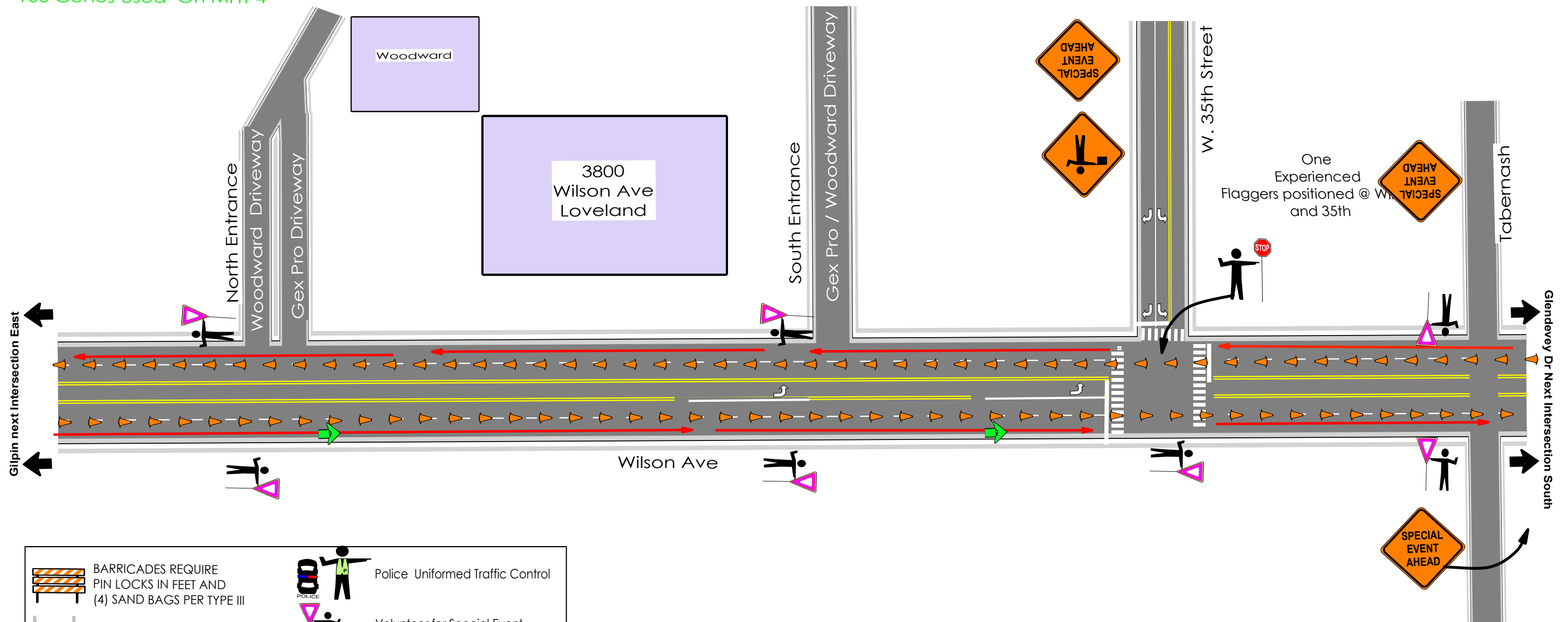


SHERYLE - TR 4

100 Cones Used On MHT 4



	BARRICADES REQUIRE PIN LOCKS IN FEET AND (4) SAND BAGS PER TYPE III		Police Uniformed Traffic Control
	DETOUR TRACKERS NEED TO HAVE TWO SANDBAGS ON THEM WHEN SET OUT.		Volunteer for Special Event - Arranged by Peggy
	DO NOT PUT ON SIDEWALK OR IN BIKE LANE.		Experienced Certified Flagger - Provided by Traffic Masters
	NO LEFTS AND NO RIGHTS SHOULD BE LOCKED ONTO VERTICAL PANELS AND DOUBLED BASED		OLYMPIC Course - Route
			SPRINT BIKE Course - Route

MHT # 4 LAKE TO LAKE TRIATHLON 2019

Not Drawn to Scale

	Date: 12-5-2018 Author: Amy Wager-Tjardes Comments: - WILL LEAVE AS MUCH ACCESS AS POSSIBLE TO RESIDENTS HOMES AND BUSINESSES - ALL SIGNS AND DEVICES WILL CONFORM TO MUTCD STANDARDS - SIGN SPACING WILL BE DETERMINED BY TABLE 6H-3 IN THE MUTCD - OPERATION WILL BE ADJUSTED AS NEEDED FOR OPERATIONS IN PROGRESS - ALL PRE WARNING SIGNS WILL BE ADJUSTED FOR SIGNAGE ALREADY IN PLACE	Contractor: Peggy Shockley Location: Loveland CO, Various roadways Project/P.O.: Lake To Lake Triathlon 2019 Contact/# : Peggy Shockley 970-669-9011 Type of Work: Special Event Triathlon	Comments: 1. SIGNS SHALL BE SPACED APPROX. 100 ft. (SEE MUTCD TABLE 6C-1) 2. SECTION 6G-13 Work Within the Travel Way @ Intersection. Note 12 When a lane through an intersection must be closed on the far side, it should also be closed on the near side approach to preclude merging movements within the intersection. 3. SECTION 6G-04- Modification to Fulfill Special Needs - Device spacing may be adjusted to allow additional reaction time. Additional Devices may be used - Arrow Boards. 4. PERSONAL VEHICLE PARKING- IS PROHIBITED IN THE RIGHT AWAY. 5. ALL BIKE TRAFFIC TO TRAVEL IN OPEN LANE WITH MOTOR-VEHICLE TRAFFIC
	TCS INFO TO COMPLETE PAPERWORK		