


COMPUTER INFORMATION	
CREATION DATE:	10/9/15
MODIFICATION DATE:	--/--/--
FILE LOCATION:	\\GFS03\SHARED\ENGR\PROJ\PARKS
FILE NAME:	SODERBERG RESTRIPIING PROP.DWG

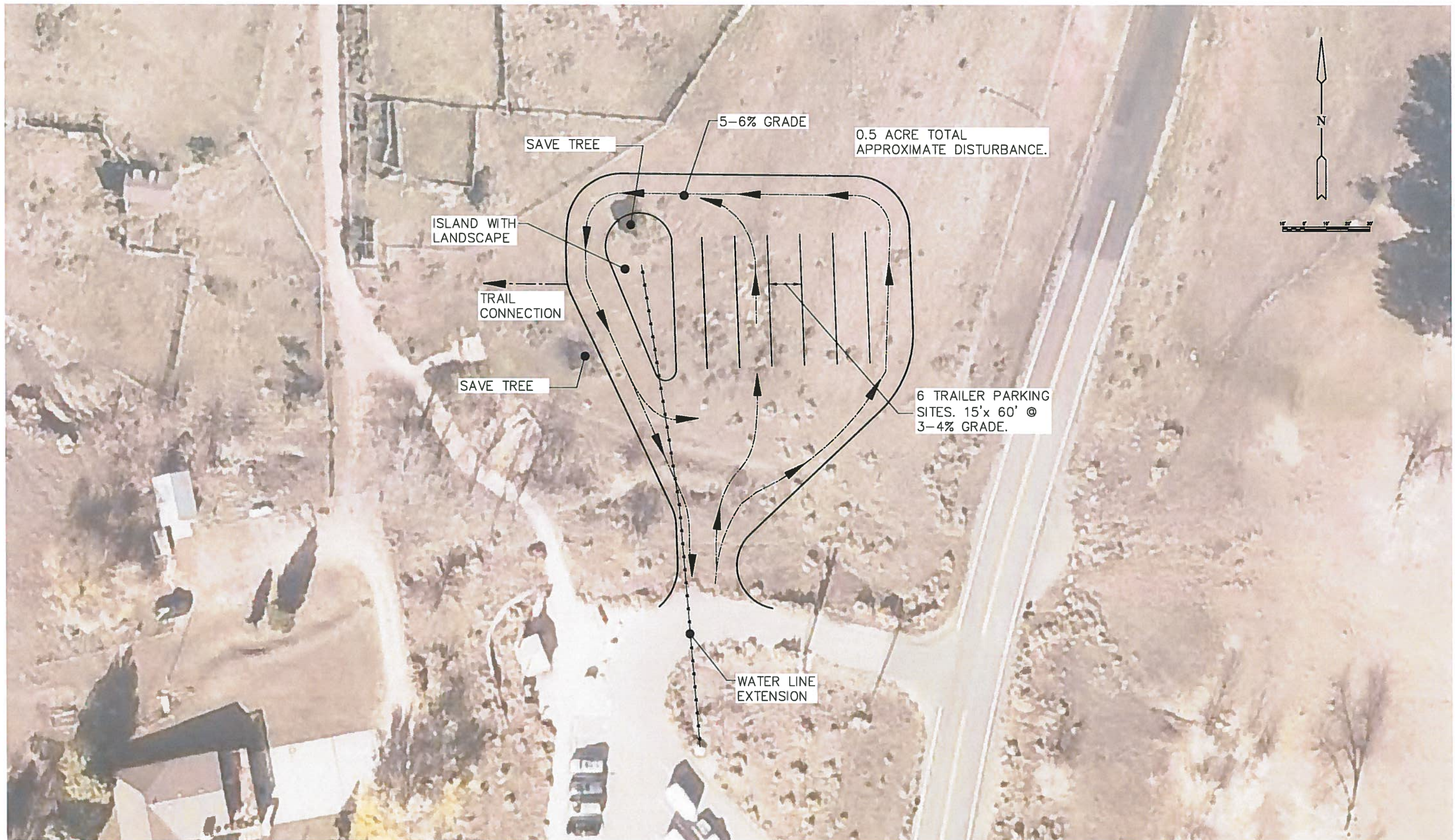
REVISIONS	
(R-1)	
(R-2)	
(R-3)	
(R-4)	
(R-5)	


**LARIMER COUNTY**  
**ENGINEERING DEPARTMENT**  
 200 WEST OAK, SUITE 3000  
 POST OFFICE BOX 1190  
 FORT COLLINS, COLORADO 80522-1190  
 (970)498-5700  
 (970)498-7986 FAX

AS CONSTRUCTED
NO REVISIONS:
REVISED:
VOID:


**SODERBERG RESTRIPIING PROPOSAL**

PROJECT NO. ###	###
SHEET NO.	1



COMPUTER INFORMATION	
CREATION DATE:	10/8/15
MODIFICATION DATE:	---/---/---
FILE LOCATION:	R:\PROJ\PARKS
FILE NAME:	SODERBERG.DWG

REVISIONS	


**LARIMER COUNTY**  
**ENGINEERING DEPARTMENT**  
 200 WEST OAK, SUITE 3000  
 POST OFFICE BOX 1190  
 FORT COLLINS, COLORADO 80522-1190  
 (970)498-5700  
 (970)498-7986 FAX

AS CONSTRUCTED
NO REVISIONS:
REVISED:
VOID:

**SODERBERG HORSE TRAILER PARKING**

PROJECT NO. ####
####
SHEET NO. 1

## Soderberg Trailhead Equestrian Trailhead Meeting

### Concerns

### Management Response

Increased traffic on Minuteman/Shoreline Dr. into the Continental North Subdivision.

Larimer County will install a more robust sign on Minuteman/Shoreline Drive at the Soderberg Trailhead entrance stating that no parking or access to public lands exists beyond this point and that the Soderberg Trailhead is the last turn around. If the Continental North HOA has other suggestions that they can agree upon to implement, Larimer County is open to discussing other alternatives to minimizing impacts from public lands visitors.

Re-stripping the paved vehicle lot will only bring more traffic to the area.

We anticipate that by widening the parking spaces to 10' wide (vs. 9' wide) to improve safety of people around vehicles, and then re-stripping the lot for vehicles-only, the total number of vehicle spaces will increase from 30 (current) to 37 spaces (which includes 2 ADA and 1 ranger dedicated vehicle space). Already, during busy periods, there are more vehicles that travel through the trailhead looking for a space to park than the additional 7 spaces will accommodate. It is not our intention to provide parking for the large number of visitors during these busy periods, but rather to resolve the equestrian users being displaced and to make wise use of the existing paved lot footprint to accommodate visitors. Similarly, adding 7 spaces is not anticipated to overwhelm the capacity of the Swan Johnson Trail, but is something we will monitor over time.

New equestrian lot won't resolve illegal parking issues at trailhead.

In other open space trailhead areas, we have learned that separating horse trailer parking does vastly reduce vehicles parking in horse trailer spaces. This concept has been vetted by equestrian stakeholders and deemed favorable for this site. By creating a separate turn off within the trailhead to the equestrian lot, we can better control illegal parking and will ramp up patrol and ticketing as needed.

New equestrian lot will be unsightly.

We will evaluate ways to reduce visibility of the new equestrian lot from the county road and greater surroundings to the extent possible. Fencing that matches the corral-style fencing will be built around the north and east sides of the equestrian trailhead to maintain the ranch character.

Dust from proposed horse trailer parking lot.

Larimer County will evaluate dust issues that occur in the North Inlet Bay and Soderberg parking areas and investigate an affordable solution. We will also evaluate ways to minimize the footprint of the equestrian parking area to reduce dust and any potential visual impact.

Protect historic structures in vicinity.

Larimer County currently is evaluating the open space historic buildings (none are currently on the state register of historic places) and developing a plan to prioritize maintenance and further stabilization. This trailhead project will not impact any of the historic Soderberg/Herrington buildings.

Minimize loss of trees in area.

The proposed new equestrian lot will be approximately 0.5 acres and effort will be made to minimize impacts to existing trees.

Create a separate walking-only path alongside Swan Johnson Trail.

We will evaluate this suggestion, along with other trail issues, in context of the larger trail system during the future Horsetooth Mountain Open Space management plan update.

Tie in trail from new horse trailer ~30' to the south to improve visibility at junction.

We will evaluate this suggestion in context of the impact to existing picnic areas.