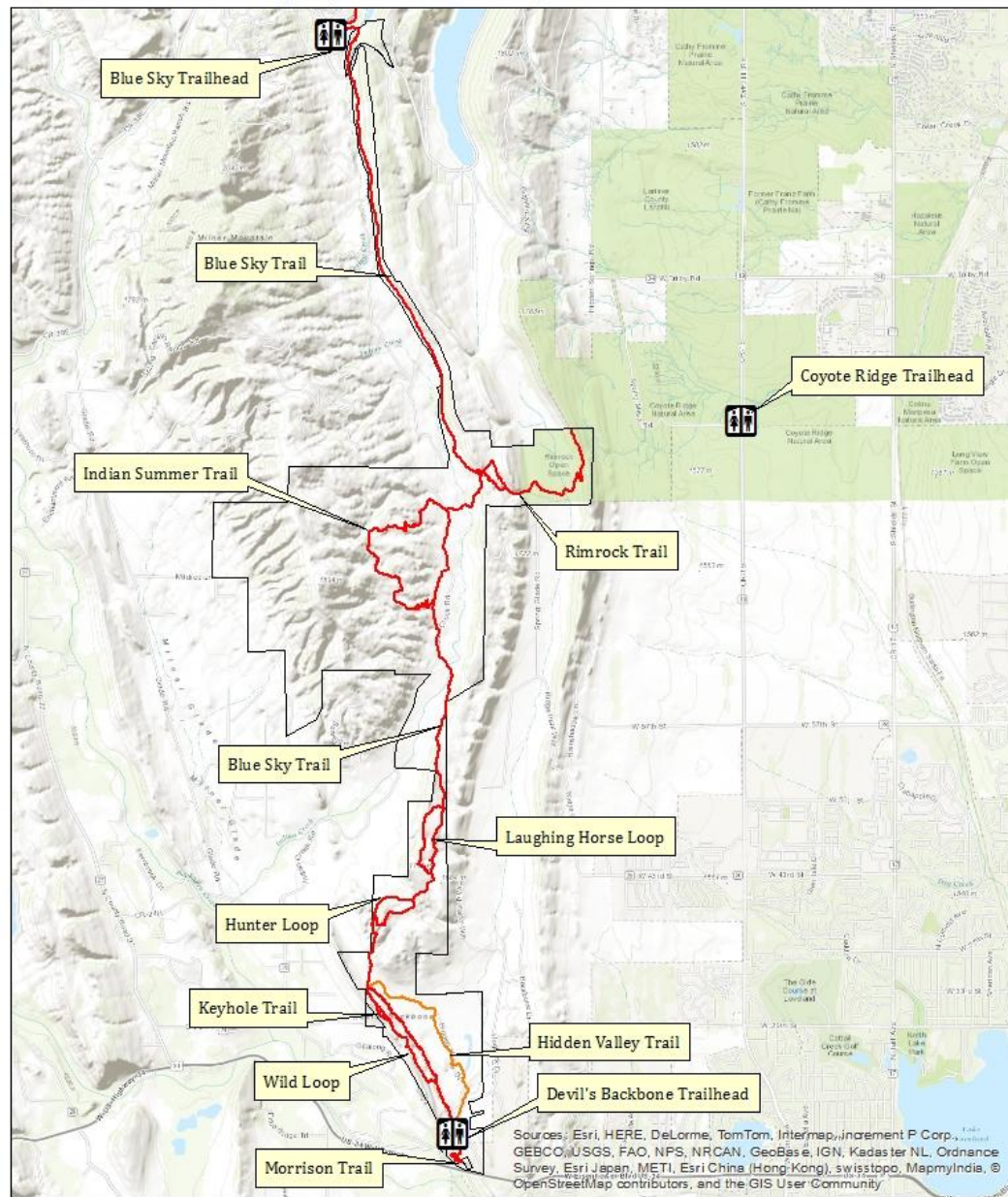


Figure 11: Devil's Backbone Open Space - New and Existing Trails



0 0.5 1 2 Miles

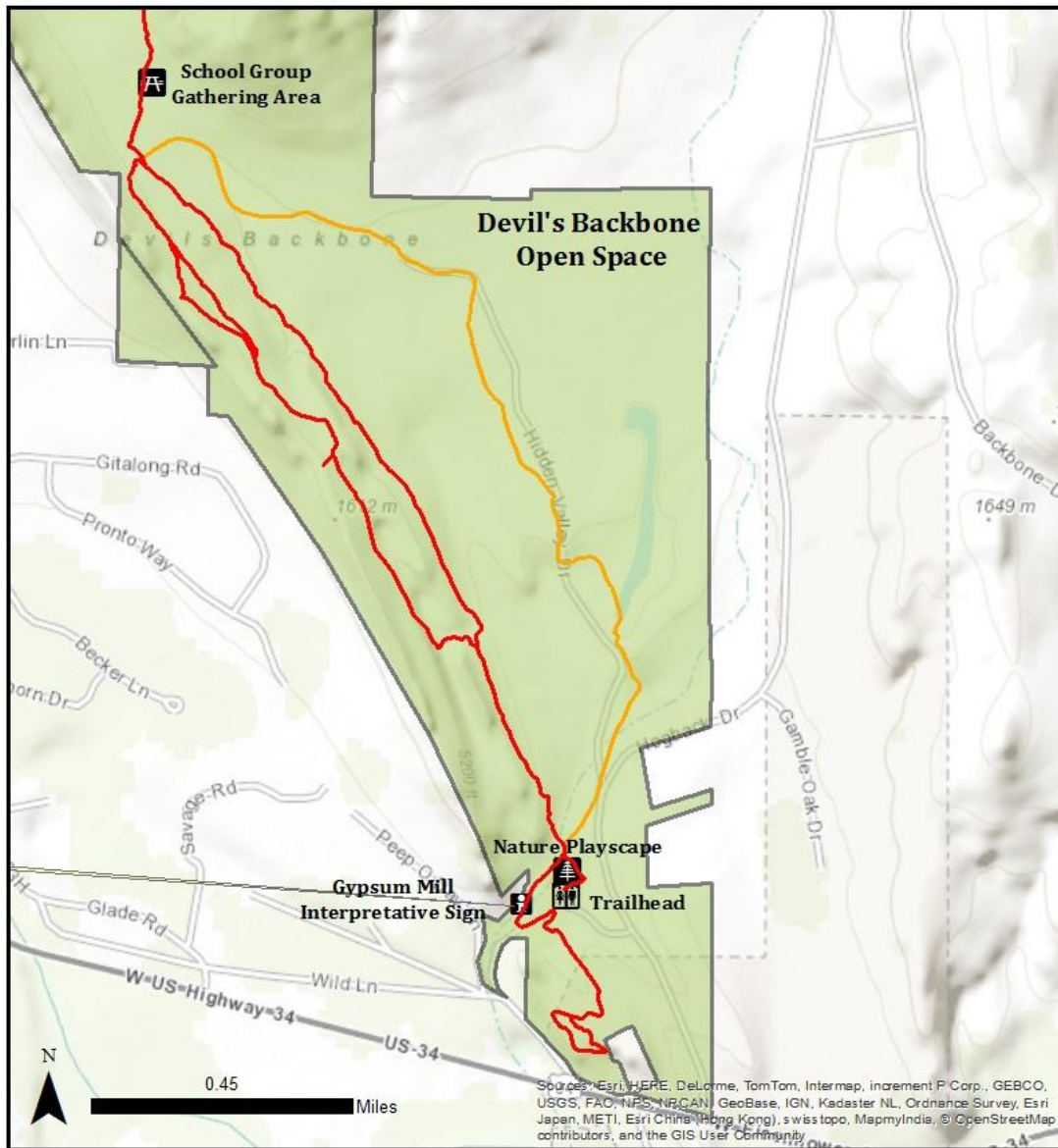
Existing Trails

New Trails

Trailheads



Figure 10: Devil's Backbone Open Space - Location of New Improvements



**New Improvement**

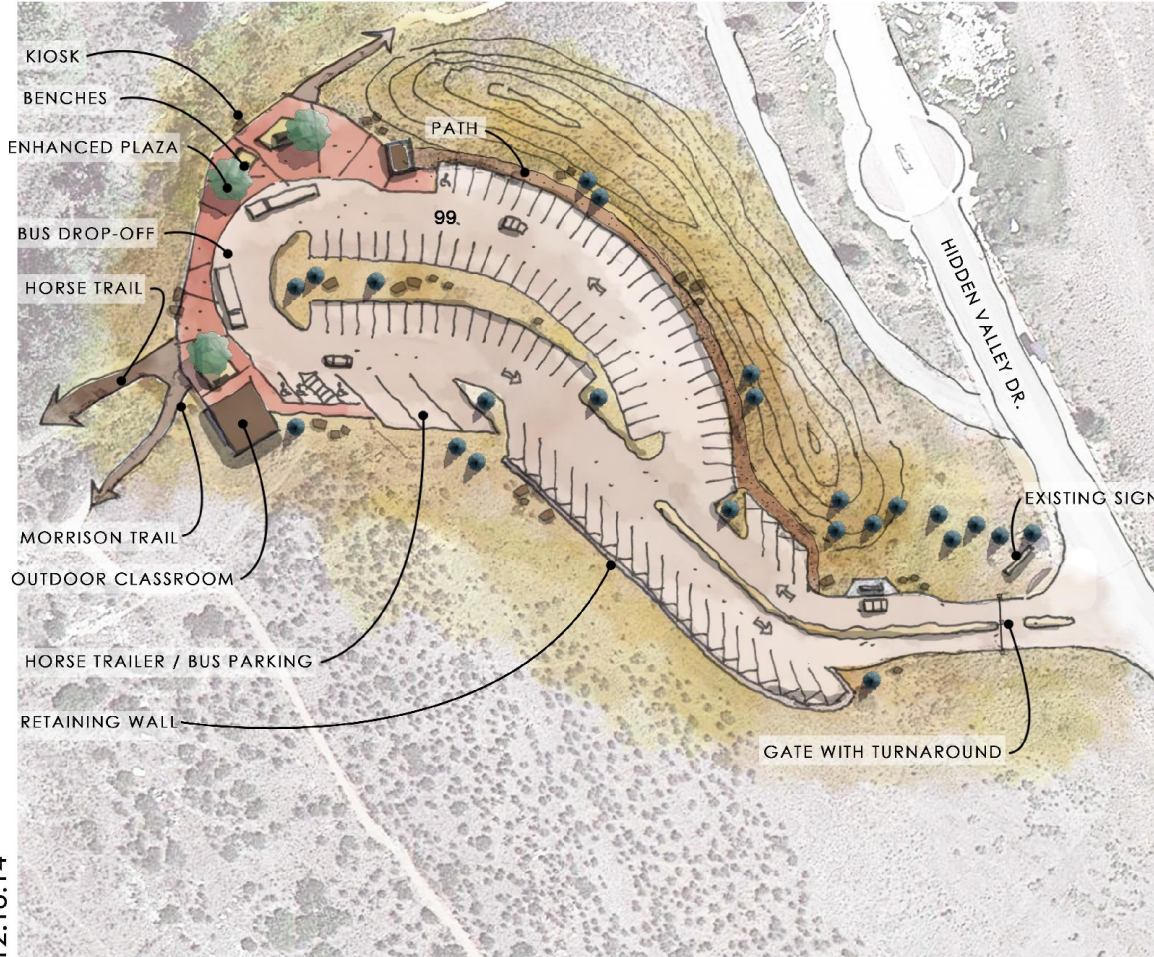
-  Nature Playscape
-  School Group Gathering Area
-  Gypsum Mill Interpretative Sign
-  Hidden Valley Trail

**Existing Improvement**

-  Trailhead
-  Existing Trails



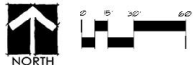
# Devil's Backbone Open Space Trailhead Larimer County, Colorado



## Features

- Keeps all parking on upper area closer to trailhead
- Keeps existing structures
- Creates pedestrian plaza emphasizing trailhead and connecting outdoor classroom
- Removes parking in front of trailhead with bus/drop-off area
- Widens trail at start and splits into pedestrian and equestrian where logical
- 99 parking spaces total
- Retaining walls likely needed along portions of parking
- Parking stalls 9' wide by 17' long at the wheel stop (allows for 2' additional over hang)
- Horse trailer / Bus parking - Three spaces
- Extra wide drive aisle (24' wide proposed, 20' typical)
- Existing berm re-graded to allow roadside parking stalls and path
- Gate with turnaround at entrance

12.18.14



Site Plan